



Orchestra Show Rider

On behalf of the cast and crew of Five By Design's *Radio Days*, we wish to thank you for contracting the company as part of your upcoming season. To ensure that the performance runs efficiently, we require your Production/Technical Manager to thoroughly read the enclosed contractual and technical information and sign below. This rider is an integral part of the contract. Please be sure to retain the original document for your records and fax or mail a signed copy to us at:

Five By Design
1160 Vierling Drive, #353
Shakopee, MN 55379-4313
Fax # (952) 400-4229

We understand each venue may have certain limitations. Please feel free to contact us to discuss alternatives or substitutions if you should have any questions regarding the materials contained in this rider. We can be reached through our office at (800) 449-7345.

Warmest regards,

Five By Design

(Production/Technical Manager)

(Telephone Number)

(Date)

Five By Design personnel:

Kurt Niska.....Artistic Director/C.E.O..... (612) 802-8171
Sheridan Zuther.....Operations Manager..... (612) 799-0245
Kellie DeJardin.....Technical Director/Stage Manager.....(612) 991-2193
Phil Henrickson.....Sound Engineer.....(920) 755-2328

RADIO HOLLY-DAYS ORCHESTRA RIDER

These items are necessary to a successful production. Your assistance in providing this information and materials will greatly assist Five By Design to present the best possible performance. Please review them and call us at (800) 449-7345 if you have questions or concerns.

Five By Design personnel:

Kurt Niska..... Artistic Director/C.E.O..... (612) 802-8171
Sheridan Zuther..... Operations Manager..... (612) 799-0245
Kellie DeJardin..... Technical Director/Stage Manager..... (612) 991-2193
Phil Henrickson..... Sound Engineer..... (920) 755-2328

IN ADVANCE:

- 1) Professional lighting and sound system to meet specifications of the enclosed "Lighting" and "Sound" requirements. Experienced technicians available to assist with Load-In, Load-Out, and to answer any questions. Please read the attached "Sound" and "Lighting" pages for specific information.
- 2) Business and/or home phone numbers of presenter, venue's technical director and staff.
- 3) A map detailing the location of hotel, performing arts venue, appropriate routing, and phone numbers. Please be specific as to the location of loading dock and the stage door of your venue when providing directions.
- 4) A schematic of the performance venue stage (including an inventory of lighting and sound equipment).
- 5) Hotel or Motel (Residence Inn, Courtyard, Comfort Suites, or comparable) near venue with swimming pool, sauna, whirlpool, exercise facility, and internet access. **NON-SMOKING ROOMS** are required, all at the same complex.
- 6) Allow broadcast and print media the opportunity to photograph and/or videotape segments of the rehearsal or performance with orchestra. (No flash photography during performance.)
- 7) Regarding social functions or outreach activities, please inform company a minimum of 30 days in advance.
- 8) If contract states presenter is responsible for providing part or all of the band, please provide name and address of who is to receive the musical scores and parts. Please provide rehearsal availability and schedule as soon as possible to our Operations Manager.
- 9) Piano and Drum Kit are to be provided by the presenter. Please see the included "Instrumentation List" for specific information.
- 10) Production specific marketing & promotional materials are available for presenter at company's website: <http://www.fivebydesign.com/RadioDays.html>. Prior to going to print, contact our Operations Manager for program information, content and layout approval (i.e., personnel and program changes). If additional needs or questions arise, please contact us for assistance.
- 11) Contact Five By Design's Operations Manager to arrange a hot meal for COMPANY of twenty-one (21) during load-in/prior to the show. Please be aware this does not account for any local crew members.

RADIO HOLLY-DAYS ORCHESTRA RIDER

- 1) Piano must be tuned prior to (but within 24 hours of) Load-In, following Rehearsal prior to performance, and before each subsequent performance. If venue has a second (rehearsal) piano, please make it accessible for warm up prior to show and during intermission.
- 2) The Stage Set-Up must be complete prior to Load-In. Lighting instruments should also be pre hung and gelled before Load-In. See attached "Set-Up Diagram" and "Lighting" pages for specific requirements.

AT LOAD-IN:

- 1) Performance venue must be available for Load-In a minimum of eight (8) hours prior to rehearsal with the orchestra. (In the event of an AM rehearsal, venue must be available for Load-In the afternoon prior.) Performance venue must also be available Two (2) hours prior to each performance
 - Load-In typically takes six (6) to seven (7) hours [not including meal breaks].
 - Load-Out typically takes two (2) to two and a half (2-1/2) hours.
- 2) Five (5) Stagehands for Load-In & Load-Out. Four (4) Stagehands for Show Call.
Load-In & Load-Out Crew Requirements: 1 Sound, 1 Light, 1 Wardrobe, 2 Hands.
Show Call Crew Requirements: 1 Sound, 1 Light, 1 Follow spot, 1 Backstage (SR).
- 3) The following are required no later than Load-In time:
 - A 30"- 32" Tam Tam (gong) with stand (will be used by a cast member).
 - Two (2) sturdy movable clothing racks (preferably high enough to accommodate floor length gowns).
 - One (1) eight foot table for offstage right Quick Change area.
 - One (1) six foot table for Sound Effects, onstage right (see set-up diagram).
 - Music stands for orchestra plus 4 extra for actors.
 - Music stand lights for orchestra plus 3 extra for actors (2 offstage right, 1 offstage left). **Onstage lights will be on a dimmer.** Company will provide a light for the piano that should be included in the circuit allocated to the stand lights. See attached "Lighting" rider.
 - Nine (9) chairs (8 offstage right, 1 offstage left).
 - Pipe and drape may be needed to create a Quickchange area located off Stage Right about 16' x 20'. This location will be determined during Load-In.
 - Three (3) gallons of **distilled** water for our clothing steamers. (**Not** drinking, spring or tap water.)
 - Access to SR from house, i.e. steps.
 - Hot herbal tea (non caffeinated with honey and lemon) regular coffee, non carbonated bottled water (i.e. Evian), Coca-Cola and cups. Please have bottled water, herbal tea and coffee available at rehearsal(s) and performance(s) as well.
 - Fruit and veggie trays available for cast and crew following each performance(s).
 - Five (5) clean Dressing Rooms to accommodate 2 people each, through run of show.
 - Company travels with a 24' box truck (35' feet long, 13' high) and a 15 passenger van (7' high). **Please arrange for level, secure parking.** The truck is equipped with a battery cutoff switch.

RADIO HOLLY-DAYS ORCHESTRA LIGHTING REQUIREMENTS

Questions regarding lighting requirements contact:

Kellie DeJardin Technical Director/Stage Manager:cell: **(612) 991-2193**

e-mail: **technicaldirector@fivebydesign.com**

- Please mail, email, or fax a schematic of your performance venue stage and lighting grid (including a lighting inventory) to company's Operations Manager.

Radio Holly-Days requires a safe and well maintained lighting system. The inventory must be adequate to complete the hanging of the enclosed plot prior to Load-In. Please have a safe lift or ladder available for focus. **If you anticipate the need to rent any equipment for your venue, please contact our Technical Director prior to doing so, to make certain it is necessary. Substitutions may be suggested.**

CONSOLE

The lighting console must be either a computer memory console or a two scene preset board with a minimum of 24 channels (ETC or Strand family preferred).

FOLLOW SPOT

We require one (1) follow spot adequate to the venue. A xenon Super Trouper is preferred for medium to large venues. Spot Color is Rosco 02, 33, 54, 60, 119 or 132 (in frames 1 through 5 respectively). LEE or GAM substitutions are acceptable.

CREW REQUIREMENTS

We require one technician familiar with your lighting system to be present at Load-In and during the run of the show, and one follow spot operator for run of the show. Our Technical Director will operate the board for the run of the show. If this presents a problem, please contact our technical personnel at least thirty (30) days in advance of the performance. Five (5) Stagehands are required for Load-In & Load-Out, and to assist with other incidental needs.

- Load-In & Load-Out Crew Requirements: 1 Sound, 1 Light, 1 Wardrobe, 2 Hands.
- Show Call Crew Requirements: 1 Sound, 1 Light, 1 Follow spot, 1 Backstage Right.

ORCHESTRA REQUIREMENTS

The Orchestra Set-Up (see diagram) must be completed prior to the scheduled Load-In. The appropriate background for the production is a full stage **black curtain** behind the orchestra. Since there is no acoustical shell being used that would normally provide overhead light for the orchestra, please hang top lights to do so. (Three color wash R68, R26 and R17) **Music stand lights are required for conductor and musicians. Stand lights for the orchestra will be on a dimmer patched in to Channel 31.** Refer to the Set-Up Diagram for additional requirements. (Five by Design will provide a light for the piano that should be included in the circuit allocated to the stand lights.) We require a minimum of fifteen (15) feet down stage of the conductor's podium for performance space.

GOBO REQUIREMENTS

Presenter will provide all gobos used for the production:

- Two (2) Rosco gobo pattern #79117-Dense Leaves 3 (Channel 20 on Light Plot).
- Two (2) Rosco gobo pattern #77772-"Snowflakes" **OR** #79129-"Snowflakes 2" (Channel 4 on Light Plot).

IMPORTANT INFORMATION REGARDING THE LIGHT PLOT

1. Trim heights are approximately 23 feet.
2. All instruments should be at least 750 watts and should be consistent wattage for equal throw distances.
3. If substitutions of either inventory or color are anticipated, please contact our Technical Director.
4. There are six (6) Practicals **and** five (5) floor mounted Par Cans. Please make dimmers available (see stage requirements and light plot for more information).
5. The light plot is based on a sixty (60) foot proscenium. If your performance space is different, please expand or condense the spacing on the electrics as needed.
6. Stand lights will be on a dimmer and will blackout a few times during the show. Please make sure the orchestra players are aware of this.
7. Please refer to light plot for additional notes.

Please Note: In order to ensure a quick and proper load-in of the show, we ask that all lights be gelled and hung prior to Load-In. If this cannot be accommodated, please contact company Technical Director immediately.

Date of Revision: October 15, 2009

Page 4 of 11

Radio Holly-Days - Orchestra
<http://www.fivebydesign.com/RadioDays.html>

RADIO HOLLY-DAYS ORCHESTRA SOUND REQUIREMENTS

Questions regarding sound requirements contact:

Phil Henrickson, Sound Engineer: (920) 755-2328.....fax: (920) 755-4442
e-mail: philhenrickson@yahoo.com

- Company travels with a system adequate for a 1000 seat auditorium with no balcony. Please advise as to size of venue and type of in-house system available as company may need to patch in to the House PA for additional coverage. **If you anticipate the need to rent any equipment for your venue, please contact our Sound Engineer prior to doing so, to make certain it is necessary.**
- Sound Engineer will use his own console for the purpose of mixing the live performance. Please provide a five (5) foot by eight (8) foot house-mix position for company's sound gear. Rear of house on the main floor is preferred.
- If the cable path from the stage to the House Mix position is greater than one hundred and fifty (150) feet, please provide one (1) Snake, with 24 in - 5 out minimum.
- Three (3) separate twenty (20) amp circuits exclusively for sound gear. One located at House Mix position, one located off stage left, and one for Bass Player's amplifier onstage (see Set-Up Diagram).
- Please provide a Plexiglas surround for the drum kit (three of four sides is fine).
- Eight (8) microphone stands (four (4) boom stand and four (4) straight stands).
- Company travels with Three (3) monitors for the rhythm section and One (1) for the brass section (see Set-Up Diagram). If you anticipate the need for additional monitors (i.e. the conductor, percussion, etc) please be prepared to provide the necessary equipment.
- During the rehearsal(s) and show(s) the House Sound person is responsible for any internal mixing or balance issues of the Orchestra and should provide our sound man with a final mix to be balanced with the vocalists in the house P.A. The company's sound man is responsible for mixing the vocalists, the stage monitor mix, and overall balance between the vocalists and orchestra.
- **Any further micing of the orchestra would be in addition to these requirements** and is at the discretion of the symphony and/or conductor. If you anticipate the need for additional micing of the orchestra, please be prepared to provide sufficient equipment.

CREW REQUIREMENTS

We require one technician familiar with your sound system to be present at Load-In and during the run of the show. Five (5) Stagehands are required for Load-In & Load-Out, and to assist with incidental needs.

- Load-In & Load-Out Crew Requirements: 1 Sound, 1 Light, 1 Wardrobe, 2 Hands.
- Show Call Crew Requirements: 1 Sound, 1 Light, 1 Follow spot, 1 Props.

COMMUNICATION

We require two-way headset communication at the following locations:

- lighting console
 - follow spot
 - stage right
 - sound mix
 - stage left (optional)
- **PLEASE CALL 3 - 4 weeks prior** to Load-In to clarify, verify, and address any questions or concerns.

RADIO HOLLY-DAYS ORCHESTRA STAGE REQUIREMENTS

Questions regarding the stage requirements contact:

Kellie DeJardin, Technical Director/Stage Manager:cell: **(612) 991-2193**

e-mail: **technicaldirector@fivebydesign.com**

- The Orchestra Set-Up (see diagram) must be completed prior to the scheduled Load-In.
- The appropriate background for the production is a full stage **black curtain** behind the orchestra (hung 35' to 40' upstage of the proscenium).
- We require a minimum of fifteen (15) feet down stage of the conductor's podium for performance space. Please contact our Technical Director if this cannot be accommodated.
- We require backstage wing space for quick changes: off stage right (approximately 16' x 20') to accommodate two (2) clothes racks, one gondola, one 8'-0" table and eight (8) chairs.
- Theatre borders and legs will be used for masking. If this is not sufficient to properly mask quick change area from audience view, pipe and drape may need to be provided. Quick change area will be determined at Load-In.

BRIEF EXPLANATION OF OUR PROPS

- All scenery elements on the Set-Up Diagram are pieces that we bring with us except the 6'-0" Sound Effects area table and the 30" - 32" Tam Tam with stand; these items will be provided by the presenter. The table should be sturdy and be nice enough to be seen onstage without the use of skirting.
- We have six (6) scenic pieces that are Edison plug practical units (including the Radio, the Lamp, the tree with lights, the "Applause" sign, the "On-Air" Sign, and the "Shadow" light). These should all be on separate circuits.
- The "On Air" sign is a hanging unit that measures 24" by 8" by 10" and weighs about 3 pounds. We would like to hang this unit up-stage center. If the nature of your venue dictates that the sign cannot be hung, it can be attached to a tripod that will put it six (6) feet off the deck. The sign is a practical unit that will need to have a separate circuit running to it. Line Set will be determined at Load-In.
- During a portion of our show, we recreate sound effects onstage. In this segment, birdseed is used to produce a "rain" effect, and glass is broken into a crash box. Both effects will make a small mess on stage right. Please make sure to have cleaning supplies available after each performance.

ITEMS THAT THE PRESENTER NEEDS TO PROVIDE:

- Risers for the orchestra (i.e. Wenger standard 4'-0" by 8'-0" and 4'-0" by 4'-0" risers at incremental heights of 8", 16" and 24"). **The back of both lower and upper levels must have a chair rail attached.** The Orchestra Set-Up (see diagram) must be completed prior to the scheduled Load-In.
- The appropriate background for the production is a full-stage **black curtain** behind the orchestra (hung 35 - 40 feet upstage of the proscenium).
- **Music stands and stand lights** are required for the musicians. (These stands are included in the count requested on page 3 in the "At Load-In" section.) **The stand lights will be on a dimmer, patched in to Channel 31.** Refer to the Set-Up diagram for additional requirements. (Five by Design will provide a light for the piano that should be included in the circuit allocated to the stand lights.)
- One (1) Concert Grand Piano. Piano must be tuned prior to (but within 24 hours of) Load-In, following Rehearsal(s) prior to performance, and before each subsequent performance.
- One (1) eight foot table, offstage right for Quick Change area.
- One (1) six foot table, stage worthy for Sound Effects area onstage right.
- Nine (9) chairs. (8 Offstage Right, 1 Offstage Left)
- A 30"- 32" Tam Tam with floor stand. (will be used by cast member)



1160 Vierling Drive, #353
Shakopee, MN 55379-4313
(800) 449-7345

e-mail: terrence.niska@fivebydesign.com
Terrence Niska, Music Librarian

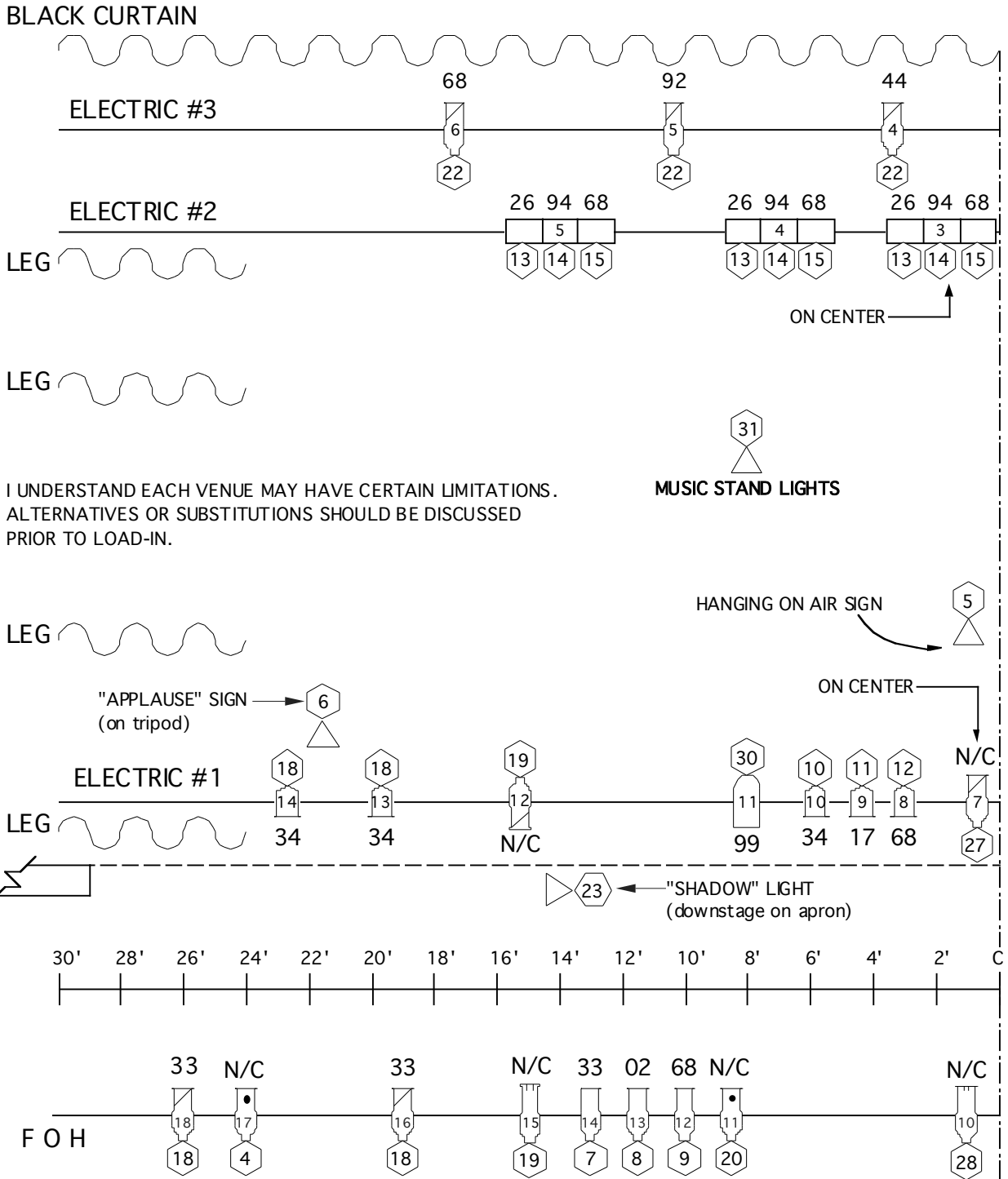
INSTRUMENTATION LIST* FOR *RADIO HOLLY-DAYS W/ORCHESTRA*

- ◇ Flute 1 & 2
- ◇ Piccolo (Double Flute)
- ◇ Clarinet 1 & 2
- ◇ Bass Clarinet
- ◇ Oboe
- ◇ Bassoon
- ◇ Tenor Saxophone (Double Alto Saxophone)
- ◇ French Horn 1, 2, 3, & 4
- ◇ Trumpet 1, 2, 3, & 4
- ◇ Trombone 1, 2, & 3
- ◇ Tuba
- ◇ Percussion 1 & 2
Vibes, Maracas, Triangle, Cabasa, Claves, Bells, Conga, Bass Drum, Cymbals, Tambourine, Xylophone, Whip Stick, Sleighbells, Celeste (by Pianist) **Sound Effects:** Old Car Horn, Slide Whistle, Police Whistle, Ratchet Toys, Boat Bell (alarm) Harpo's Air Horn, Electric Doorbell, Pots & Pans, Cowbell
- ◇ Timpani
- ◇ Drum Set: Four-piece drum set (bass, snare, 1 rack tom, floor tom); Hi-hat stand, Four (4) cymbal stands – at least 2 with a boom, Bass pedal, Cowbell and mounting device ("The Claw" or something similar OR additional cymbal stand), Throne, and Rug. Snare head should be coated. Optional: Cymbals – preferably 2 rides, 1 crash, and a pair of high-hats. [Check contract before hiring a drummer.]
- ◇ Grand Piano [Check the contract before a pianist is hired.]
- ◇ Harp
- ◇ Violin 1 (10)
- ◇ Violin 2 (8)
- ◇ Viola (6)
- ◇ Cello (6)
- ◇ Contrabass (1 Jazz upright with pickup and amplifier)
Example: 3/4-7/8 Size Bass
Fully Carved instrument with bow (German, French, Italian)
Thomastik Spirocores strings
Pickup attached, i.e. "The Realist"
Bass Amp recommendations : Yamaha, Mesa Boogie
- ◇ Guitar (*Optional*) (electric rhythm guitar with amplifier)

*This is only a list of the instruments required for our orchestrations. Check the Contractual Agreement prior to hiring players to insure accurate personnel requirements.

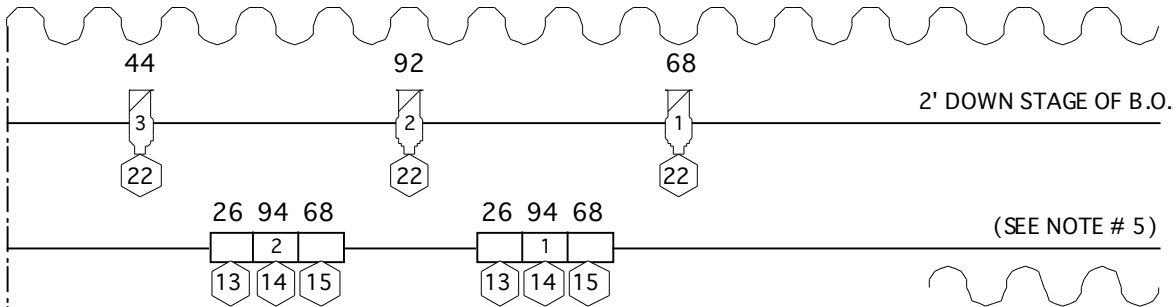
RADIO HOLLY-DAYS LIGHT PLOT (ORCHESTRA)

DESIGNED BY: JAY D. PASKA REVISED 10-14-08 BY: DE



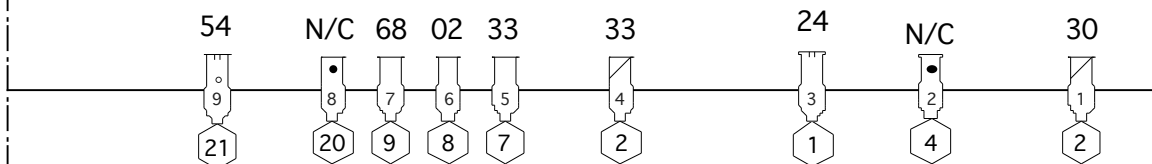
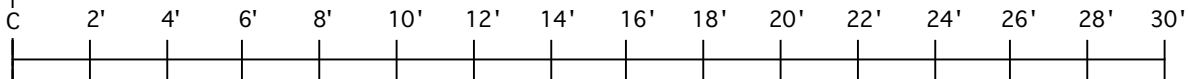
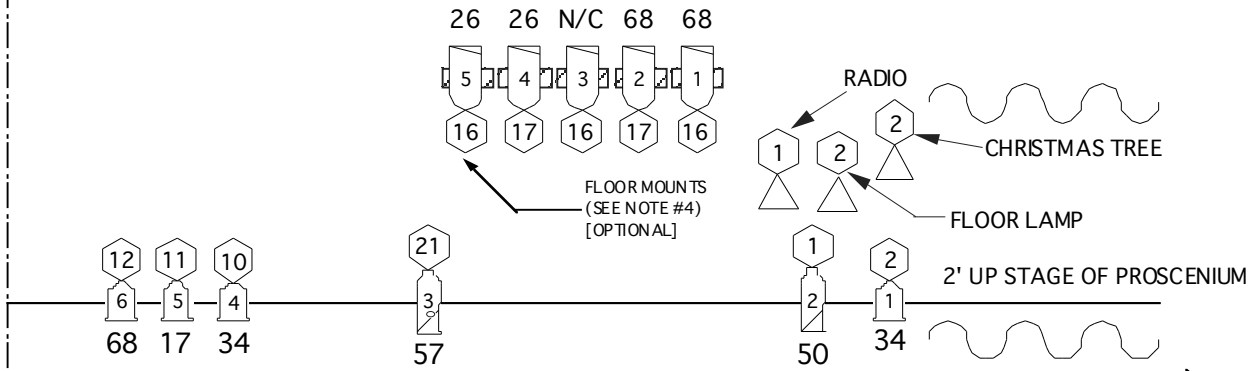
LEGEND

	6X9 (40°)		FAR CYC
	6X12 (30°)		PAR MEDIUM
	6X22 (12°)		PAR NARROW
	8" FRESNEL		PRACTICAL



PLEASE NOTE:

I HAVE **NOT** INCLUDED INSTRUMENTS TO LIGHT THE ORCHESTRA. SINCE WE ARE NOT USING THE SHELL THAT WOULD PROVIDE LIGHTING, PLEASE HANG UNITS TO DO SO. A THREE COLOR WASH R26, R68, R17 IN CHANNELS 24, 25, 26 RESPECTIVELY.

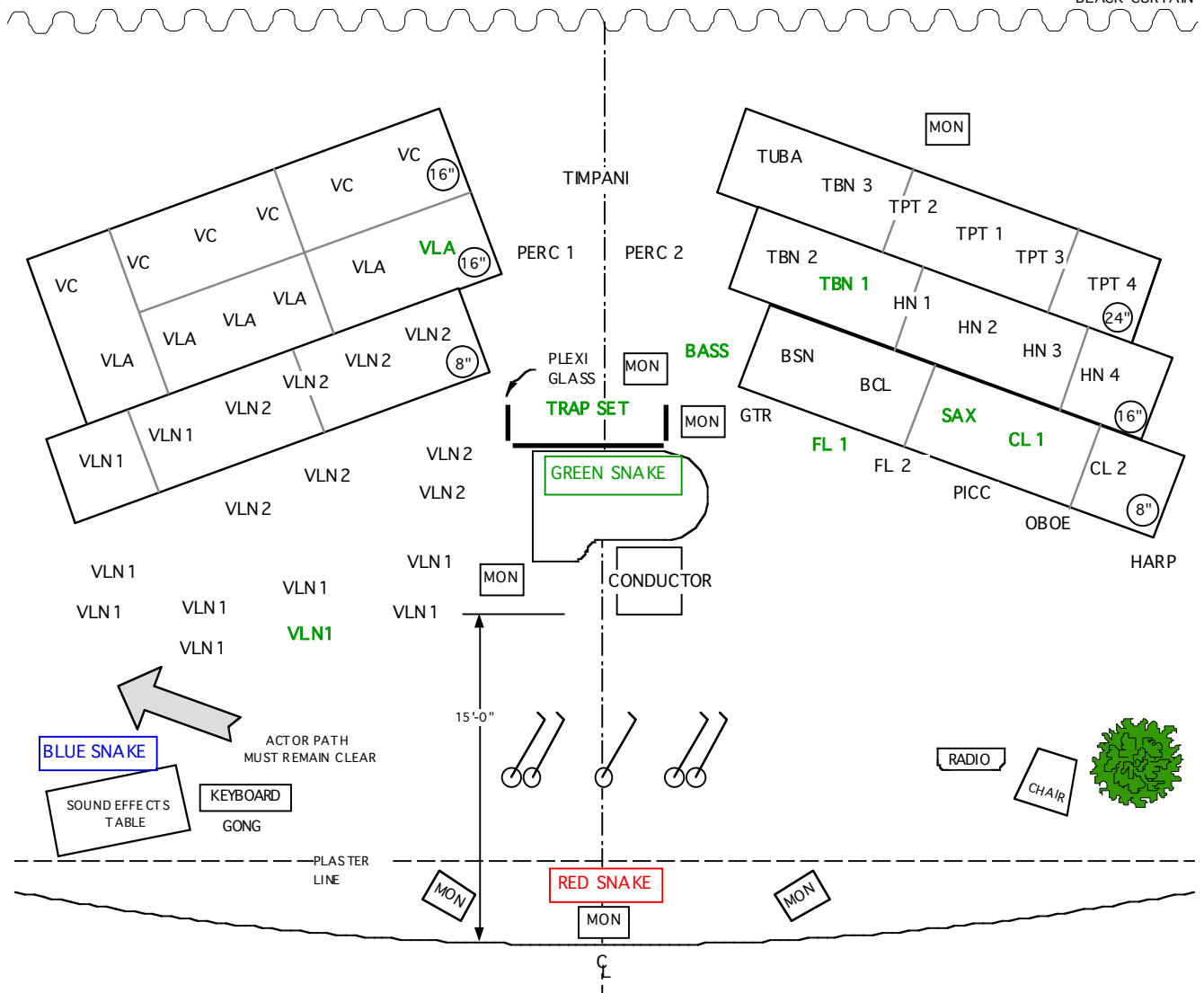


NOTES:

- 1-PLOT MUST BE HUNG AND GELLED PRIOR TO LOAD-IN.
- 2-FRONT OF HOUSE UNITS ARE BASED ON A MEDIUM THROW DISTANCE. IF YOUR FOH POSITION IS CLOSER OR FARTHER AWAY, SUBSTITUTE APPROPRIATELY.
- 3-THE BLACK CURTAIN SHOULD BE HUNG 38' TO 40' FROM THE PROSCENIUM OR FAR ENOUGH UPSTAGE TO ALLOW ROOM FOR BOTH THE ORCHESTRA AND OUR DOWNSTAGE SPACE NEEDS.
- 4-FLOOR MOUNTED PARS LIVE ON CENTER, ABOUT ONE FOOT DOWN STAGE OF THE BLACK CURTAIN.
- 5-PRACTICALS ARE SCENERY ELEMENTS WE PROVIDE.
- 6-ALL GEL IS ROSCO LUX. SPOT COLOR IS 02, 33, 54, 60, 132 IN FRAMES 1 THRU 5 RESPECTIVELY.
- 7-ELECTRIC #2 POSITION IS DETERMINED BY THE THROW DISTANCE OF YOUR CYC LIGHTS. ELECTRIC #3 SHOULD BE ABOUT 2 FEET DOWN STAGE OF THE BLACK CURTAIN. ELECTRICS #2 AND #3 CAN BE COMBINED IF THE ELLIPSOIDALS ARE EVENLY SPACED.
- 8-CHAN 4 IS A GOBO EFFECT FOCUSED ON CURTAIN. TWO ROSCO PATTERN #77772-"SNOWFLAKES" OR #791 29-"SNOWFLAKES 2" ARE NEEDED.
- 9-CHANNEL 20 IS A GOBO EFFECT FOCUSED ON THE FLOOR. TWO (2) ROSCO PATTERN #791 17-"DENSE LEAVES 3" ARE NEEDED.
- 10-ORCHESTRA STAND LIGHTS WILL BE ON A DIMMER PATCHED INTO THE LIGHT BOARD AS CHANNEL 31.

RADIO HOLLY-DAYS (ORCHESTRA) SOUND PLOT & PATCH SHEET

BLACK CURTAIN



Mic	Sub Snake	Main Snake	-Send Lines-
Vocal 1	Red Snake 1 2 3 4 5	1	A
Vocal 2		2	B
Vocal 3		3	C
Vocal 4		4	D
Vocal 5		5	E
Piano Low	Green Snake 1 2 5 7 8 9 10 11 12 13 14 15	13	F
Piano High		14	26
Guitar		25	
Saxophone		17	
Clarinet 1		18	
Flute 1		19	
Drums		20	
Harp		11	
Low Strings		9	
High Strings		10	
Trombones	16		
Bass	15		
Thunder	Blue Snake 1 2 3 4 5 6 7	21	
Floor		22	
Wind		23	
Door		24	
[open]		-X-	
Keyboard	12		
OffStage Announce	7		
AI's Wireless	6		
Bell Boy Wireless	8		
Monitors			
Delta Max (House)			
Side Fill Fronts			
Front Center			
Piano/Bass			
Horns			
Side Fill (Traps)			
Drums			